



**Social Distancing Solutions**



# Tension Frame Modular Systems

---

**We are constantly adapting and innovating by providing solutions for everyday challenges, whether they are exhibition stands, events, conferences, modular, customisable or reconfigurable framework.**

The universality and adaptability of our tension framings systems means we have been able to adapt them for use as exceptionally flexible and easy to install social distancing solutions in every conceivable commercial space.

The systems are designed to be installed with no tools or minimal tools, making installation, whether you do it yourself or use a sub-contractor, a relatively simple task.

Likewise adapting the systems for future changes is a simple and pain free task.

And when this is all over ALL these systems can be re-tasked as any sort of display or exhibition stand.

## Key Features

- Can be configured and then reconfigured easily
- Simple construction – self install very easy
- A single tool or no tools required.
- High quality, lightweight anodised aluminium profiles
- Can be a mix of branded or clear panel inserts
- A range of customisable and complementary options to create the complete solution.
- Suitable for all a whole range of environments including offices, shops, hotels, schools, call centres and shared workspaces

## Full turnkey solution

- **Free design service**
- **Modular and reconfigurable**
- **Design, build and deliver**
- **Self-build system requiring no tools**
- **Site surveys and installation service**



# Desk Dividers

USE CLEAR OR FROSTED ACRYLIC OR CLEAR VINYL INSERTS, WITH ADDED GRAPHICS

Protect individuals by creating separation dividers between desks and workstations. Designed to keep distance and reduce risk, our range of desk dividers are fully customisable to create a unique solution for your environment.

U-shaped



L-shaped



Straight



## Floor standing



## Acrylic



- Modular, premium finish product
- Sturdy mount onto desks
- Link together for specific desk layouts
- Customisation options available
- Reconfigurable: add or remove components with ease
- Fixed or free standing options available
- Adjustable feet provided
- Exact desk height dimensions required



**Suitable for a wide range of environments.**

## Desk Partitions

---

Use modular walling to separate desks and workstations. Designed as partitioning to protect and reduce risk between individuals. All desk partitions are fully customisable to meet exact requirements including sizing, materials and branding.

Fabric partitions



CUSTOMISE TO YOUR ENVIRONMENT  
WITH FABRIC GRAPHICS.



**Part acrylic partitions**



**1.5m high**

**2m high**



USE CLEAR OR FROSTED ACRYLIC OR CLEAR VINYL  
INSERTS, WITH ADDED GRAPHICS

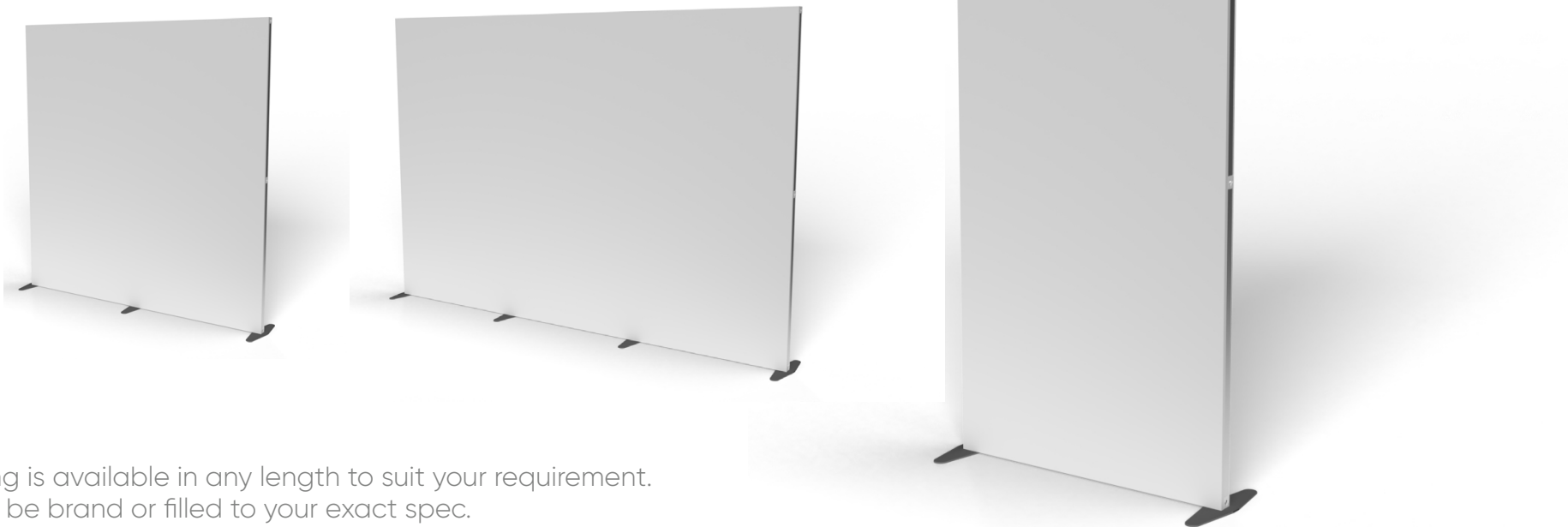




## Freestanding Walling

---

**A range of complementary products designed to create zoning, walkways, partitions, and semi-private workspaces to provide safety barriers between individuals. Ideal for dividing open plan spaces, whilst still providing line of sight.**



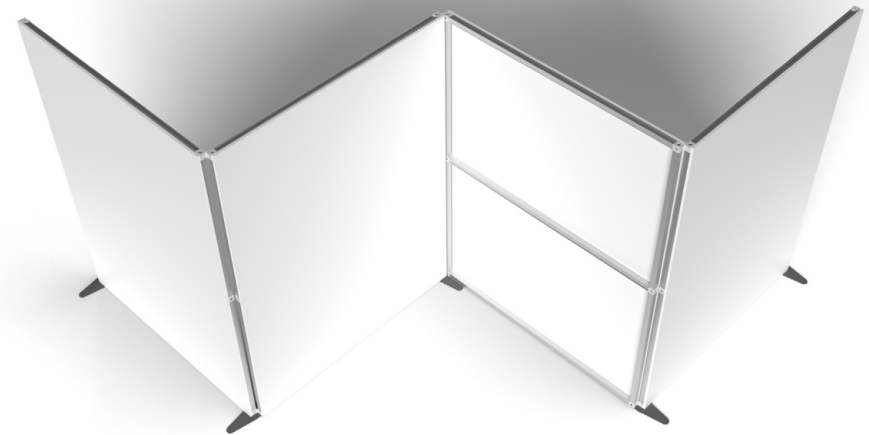
Walling is available in any length to suit your requirement. It can be brand or filled to your exact spec.



**Design your space with customised walling.**

AVAILABLE IN A RANGE OF  
STANDARD AND CUSTOM SIZES  
TO SUIT YOUR NEEDS

**Position hinged walling exactly how you need it.**



# Video Conferencing Walls

---

**SMALL FREESTANDING  
VIDEO CONFERENCE  
BACKDROP**

WITH FEET



**FREESTANDING  
VIDEO  
CONFERENCE  
BACKDROP**

WITH FEET



**FREESTANDING  
VIDEO  
CONFERENCE  
BACKDROP  
(GREEN SCREEN)**

WITH FEET



## Retail Screens

---

Screening for retail environments to protect both staff and customers. Ideal for checkout and serving areas, to reduce risk without compromising human interaction and service.



**Freestanding screen**



**Countertop screen**



TEAM WITH FREESTANDING WALLING AND OTHER SOCIAL DISTANCING PRODUCTS FOR THE COMPLETE SOLUTION.

## Retail/Hotel/Banks

---

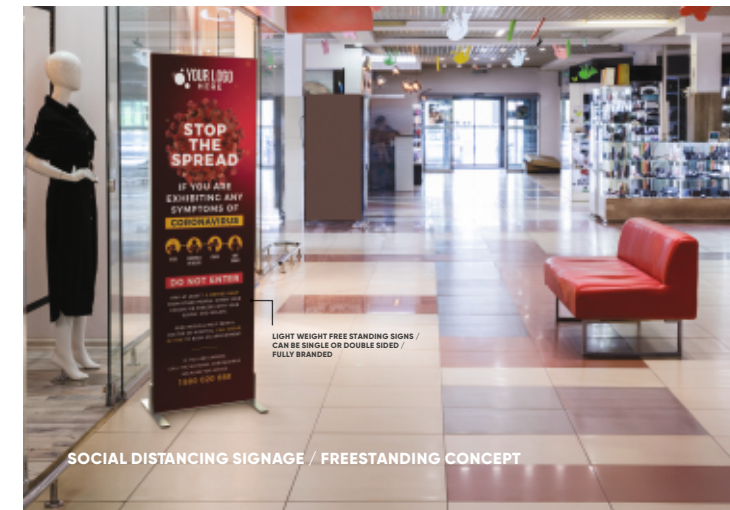


### Full turnkey solution

- Free design service
- Modular and reconfigurable
- Design, build and deliver
- Self-build system requiring no tools
- Site surveys and installation service

## Restaurant/Café/Retail

---



### Full turnkey solution

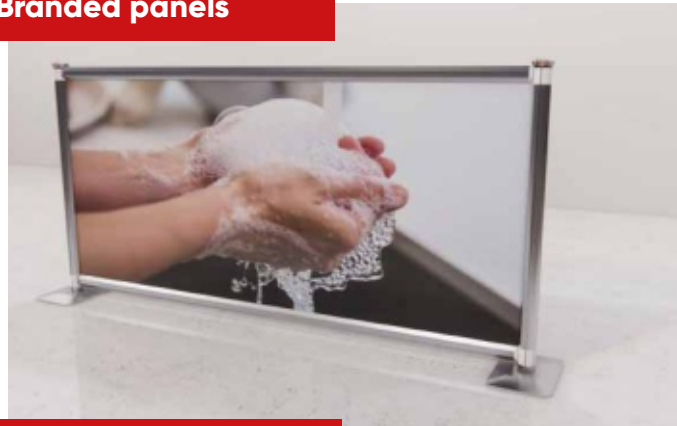
- Free design service
- Modular and reconfigurable
- Design, build and deliver
- Self-build system requiring no tools
- Site surveys and installation service



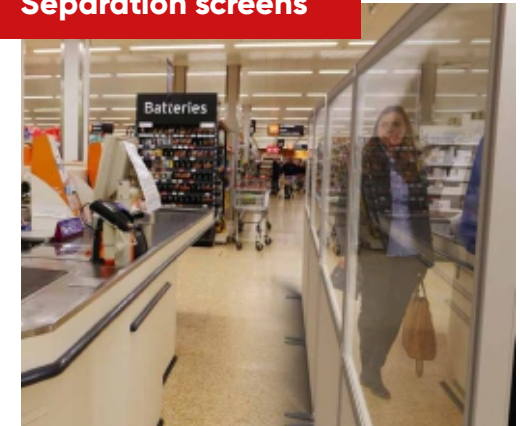
# Internal Queuing Systems

Our queuing systems are designed to cope within high footfall areas to social distance between individuals. Great for retail environments and areas where queuing is inevitable.

Branded panels



Separation screens



Queue management

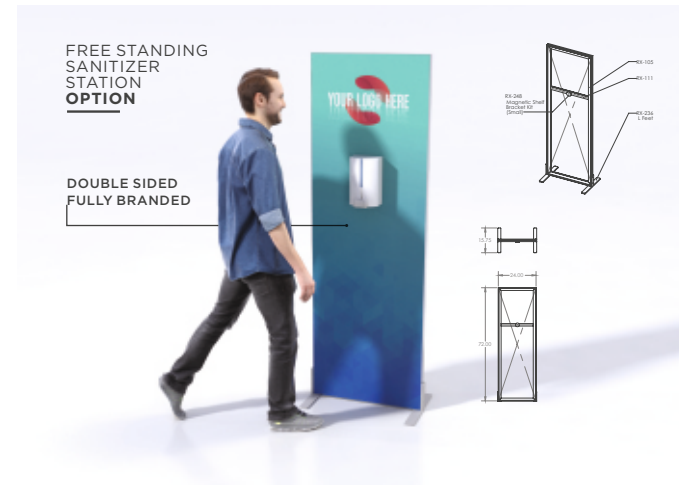


SEPARATION SCREENS AND QUEUE MANAGEMENT SOLUTIONS.

FAST ASSEMBLY, REPOSITION WHEN NEEDED, AND PACKS FLAT WHEN NOT IN USE.



# Hand Sanitizer Station Ideas



## Custom Printed re-useable cloth masks

---

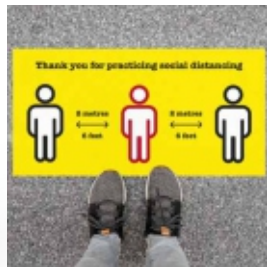


- No limit to size (within the mask) or complexity of the the design we can print.
- 2 layers - internal cotton lining - external printed knitted polyester layer.
- Inner layer 100% cotton for comfort.
- Shaped to the face for close fit and comfort.
- Padded insert along the top - mould to your face for close fit and comfort.
- 2 x Elastics go behind the head and NOT the ears for comfort and ease of fit and use.
- Fully machine washable and can go in tumble dryer

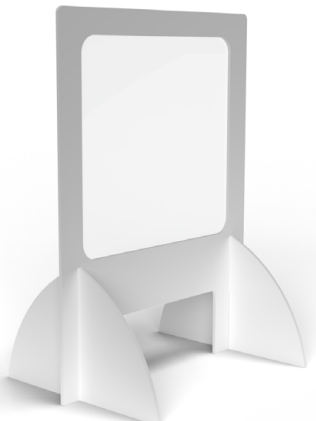
# Essentials

To complete your social distancing environments, you might want to consider these essentials. Simply add these products to your environment to protect, reduce risk, and provide information. All quick and easy to implement in a range of customisable sizes.

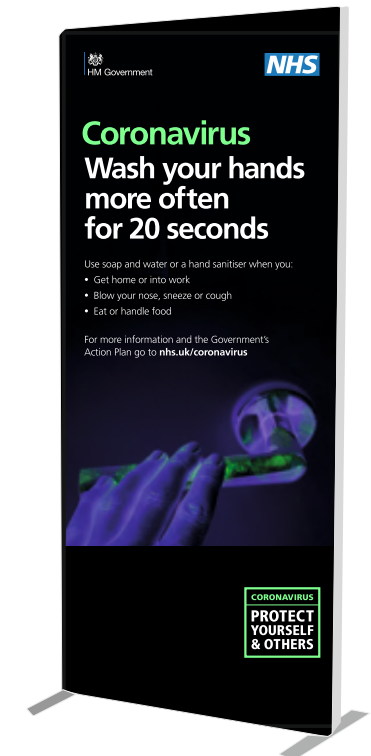
### Floor stickers



### Sneeze guards



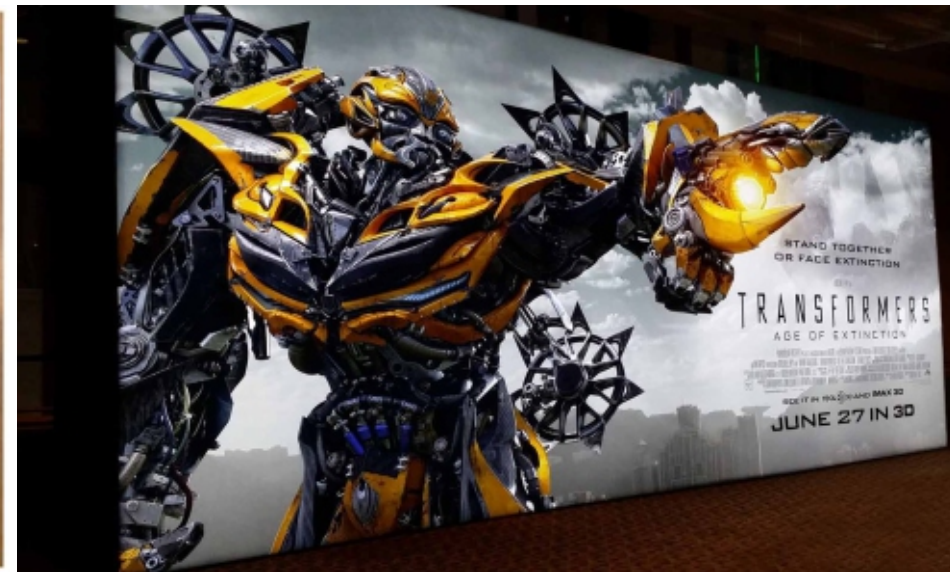
### Warning and Direction Signs



### portable fabric stands

# And when it is all over - you can re-form your system to do this..

---



## Full turnkey solution

- Free design service
- Modular and reconfigurable
- Design, build and deliver
- Self-build system requiring no tools
- Site surveys and installation service



---

• Design • Build • Deliver

---

julian@nuwavedisplay.com  
01748 834850

Unit7E EastonWay  
Colburn,  
Catterick Garrison,  
North Yorkshire,  
DL94GA

[www.nuwavedisplay.com](http://www.nuwavedisplay.com)